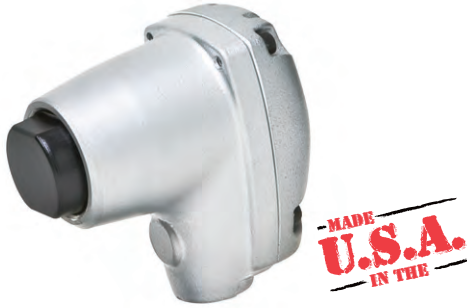


One Shot & Specialty Hammers



Michigan Pneumatic Model MP-AH15

Palm Hammer

Lightweight, palm-size air hammer replaces a variety of cumbersome hammers. Equipped with T-15-M plastic tip standard. Other interchangeable tips available in plastic, steel and aluminum.

Height.....	3-5/8"	Weight.....	2 lbs.	Air Inlet.....	1/4" NPT
-------------	--------	-------------	--------	----------------	----------



MP-RH20

MP-RH80

Michigan Pneumatic Model MP-RH20 & MP-RH80

One Shot Hammers

One shot hammer for delicate operations requiring lower power, including the insertion of pins, bushings, collar caps, oil seals, etc. Each lever pull delivers a single blow of precise power. The force of the hit can be regulated by adjusting the air pressure.

RH8023 Snap Rivet Retainer **RH8029** Snap Rivet

Model No.	Power	Length	Weight	Air Inlet Thread	Avg. Air Consumption
MP-RH20	0.23 kgf-m	8-3/8"	2.00 lbs.	1/4" MPT	0.008 cf/stroke
MP-RH80	0.32 kgf-m	10"	2.86 lbs.	1/4" MPT	0.023 cf/stroke



MP-RH90

MP-RH100Z

Michigan Pneumatic Model MP-RH90 & MP-RH100Z

One Shot Hammers

Heavy-duty, hammer for the insertion of pins, bushings, collar caps, oil seals, etc., requiring greater power. Each lever pull delivers a single powerful blow. Air pressure can be adjusted to regulate the force of each blow.

RH100Z-28 Snap Rivet Retainer **RH8029** Snap Rivet
RH100Z-29 Snap Rivet Ring

Model No.	Power	Length	Weight	Air Inlet Thread	Avg. Air Consumption
MP-RH90	0.60 kgf-m	12-29/32"	3.53 lbs.	1/4" MPT	0.042 cf/stroke
MP-RH100Z	0.90 kgf-m	12-23/32"	3.86 lbs.	1/4" MPT	0.053 cf/stroke



MADE U.S.A. IN THE

Michigan Pneumatic Model MP-PRT20B

One Shot Hammer

Straight hammer designed to insert roll and spring pins with one blow. Features ball type retainer for easy chisel removal and padded hand grip for operator comfort. Equipped with blank chisel.

PHT-0019 Blank Chisel
PHT-0099 3/4" Round Face Blank Chisel

Piston Stroke.....	3-1/4"	Length.....	11-3/8"
Bore.....	1"	Weight.....	3.85 lbs.
Shank Diameter.....	3/8"	Air Inlet Thread.....	1/4"



MADE U.S.A. IN THE

Michigan Pneumatic Model MP-PHT10B

One Shot Hammer

Pistol one-shot hammer with quick change retainer. Features a bail type hanger and ball type retainer. Special chisels can be manufactured with different length ball grooves to increase the travel distance or throw of the chisel. Equipped with blank chisel.

PHT-0019 Blank Chisel
PHT-0099 3/4" Round Face Blank Chisel

Piston Stroke.....	3-1/4"	Length.....	9-3/4"
Bore.....	1"	Weight.....	3.30 lbs.
Shank Diameter.....	3/8"	Air Inlet Thread.....	1/4"



Pin Riveter & Automotive Air Hammer



Michigan Pneumatic Model MP-G43H

Pin Riveter

Used for fine riveting applications such as very small rivets, brads, tacks and screws, and light peening and scaling applications. Can also be used for seating press-fit drive studs, drive screws and spring pins. Ideal for straightening shafts and broaches. **Available with 3/8" hex shank sets only.**

PR043H004 Hex Driver

Blows Per Minute	9000	Length.....	6"
Rivet Capacity.....	1/16"	Weight.....	13 oz.
Stroke.....	1/2"	Air Inlet Thread	1/4"



Michigan Pneumatic Model MP-T26

Stone Tool

Carving hammer suitable for marble dressing, facade scaling and ornamental stone. Low air consumption, easy handling and high output makes this tool very practical.

971CC	1" Wide Chisel	889MC	1/2" Machine Chisel
972CC	1-1/4" Wide Chisel	939MP	3/4" 9-pt. Tool

Bore.....	1"	Length.....	7-11/16"
Stroke.....	1-3/16"	Weight.....	3 lbs.
Blows Per Minute	3500	Air Inlet Thread	1/4"

Chisel not included



Michigan Pneumatic Model MP-5145-ST

Air Hammer - Heavy Hitting

Features an independent power regulator, "teasing" throttle for operator control, and a one-piece metal motor housing for long life. Ideal for panel cutting and muffler removal. **0.401 shank.**

Piston Stroke.....	2-5/8"	Weight.....	3.5 lbs.
Blows Per Minute	3500	Air Inlet Thread	1/4"
Length.....	6-3/4"	Avg. Air Consumption	4 cfm



Michigan Pneumatic Model MP-1020-F

Air Hammer - Heavy Hitting

Designed for heavy-duty mechanical work. Cuts rivets off ball joints, shackle pins, universal joints, king pins, etc. Used for ripping, punching and driving. Features a durable, lightweight nylon handle. **0.401 shank. Made in U.S.A.**

Piston Stroke.....	2-3/4"	Weight.....	2.625 lbs.
Blows Per Minute	3700	Air Inlet Thread	1/4"
Length.....	6-1/4"	Avg. Air Consumption	4 cfm



Michigan Pneumatic Model MP-1010-F

Air Hammer - Extra Heavy-Duty

Designed for heavy-duty mechanical work. Cuts rivets off ball joints, shackle pins, universal joints, king pins, etc. A heavy-duty tool for heavy jobs. Features a durable, lightweight nylon handle. **0.401 shank. Made in U.S.A.**

Piston Stroke.....	3"	Weight.....	3.25 lbs.
Blows Per Minute	2600	Air Inlet Thread	1/4"
Length.....	7-1/2"	Avg. Air Consumption	4 cfm