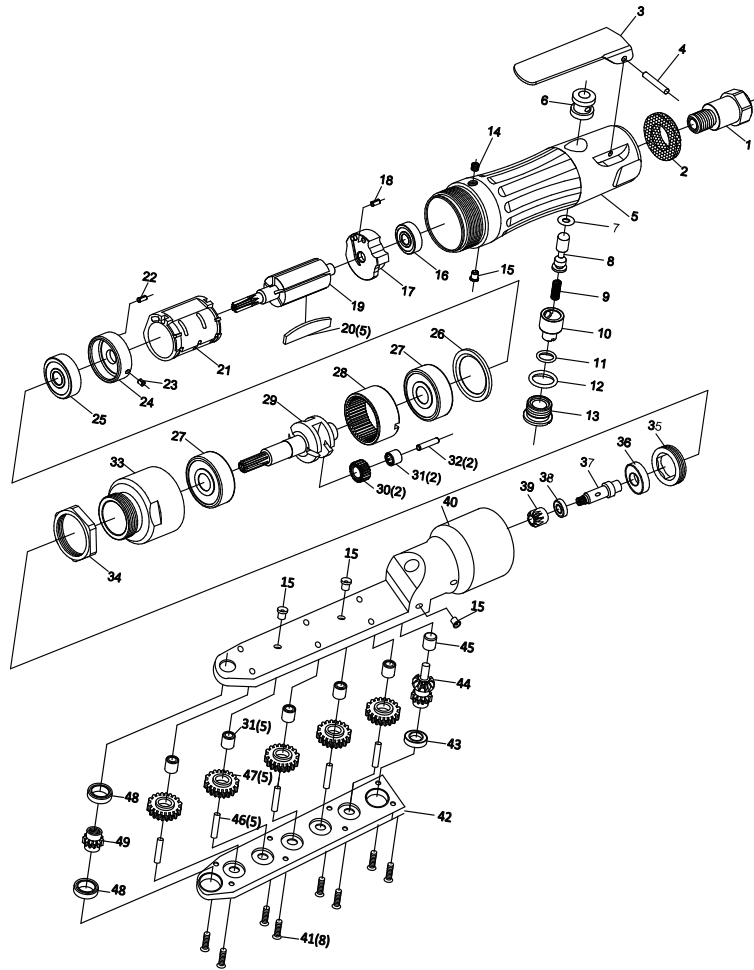




**MICHIGAN PNEUMATIC TOOL, INC.**

# MP-FD30162 90° Flat Offset Angle Drill



Index	Part No.	Description	Qty.
1	30161-01	Inlet	1
2	30161-02	Muffler	1
3	30161-03	Lever	1
4	30161-04	Pin	1
5	30161-05	Housing	1
6	30161-06	Valve Bushing	1
7	30161-07	O-Ring	1
8	30161-08	Valve Stem	1
9	30161-09	Valve Spring	1
10	30161-10	Regulator	1
11	30161-11	O-Ring	1
12	30161-12	O-Ring	1
13	30161-13	Plug	1
14	30161-14	Set Screw	1
15	30161-15	Grease Fitting	4
16	30161-16	Ball Bearing	1
17	30161-17	End Plate	1
18	30161-18	Locating Pin	1
19	30161-19	Rotor	1
20	30161-20	Vanes	5
21	30161-21	Cylinder	1
22	30161-22	Locating Pin	1
23	30161-23	Locating Pin	1
24	30161-24	Front Plate	1
25	30161-25	Ball Bearing	1

Index	Part No.	Description	Qty.
26	30161-26	Spacer	1
27	30161-27	Ball Bearing	2
28	30161-28	Ring Gear	1
29	30161-29	Carrier	1
30	30161-30	Idler Gear	2
31	30161-31	Needle Bearing	7
32	30161-32	Pin	2
33	30161-33	Adapter	1
34	30161-34	Lock Nut	1
35	30161-35	Lock Ring	1
36	30161-36	Ball Bearing	1
37	30161-37	Drive Spindle	1
38	30161-38	Ball Bearing	1
39	30161-39	Bevel Gear	1
*40	30162-40	Flat Housing	1
41	30161-41	Screw	8
*42	30162-42	Flat Cover	1
43	30161-43	Ball Bearing	1
44	30161-44	Gear - Combination	1
45	30161-45	Needle Bearing	1
46	30161-46	Pin	5
47	30161-47	Idler Gear	5
48	30161-48	Ball Bearing	2
49	30161-49	Gear Spindle	1