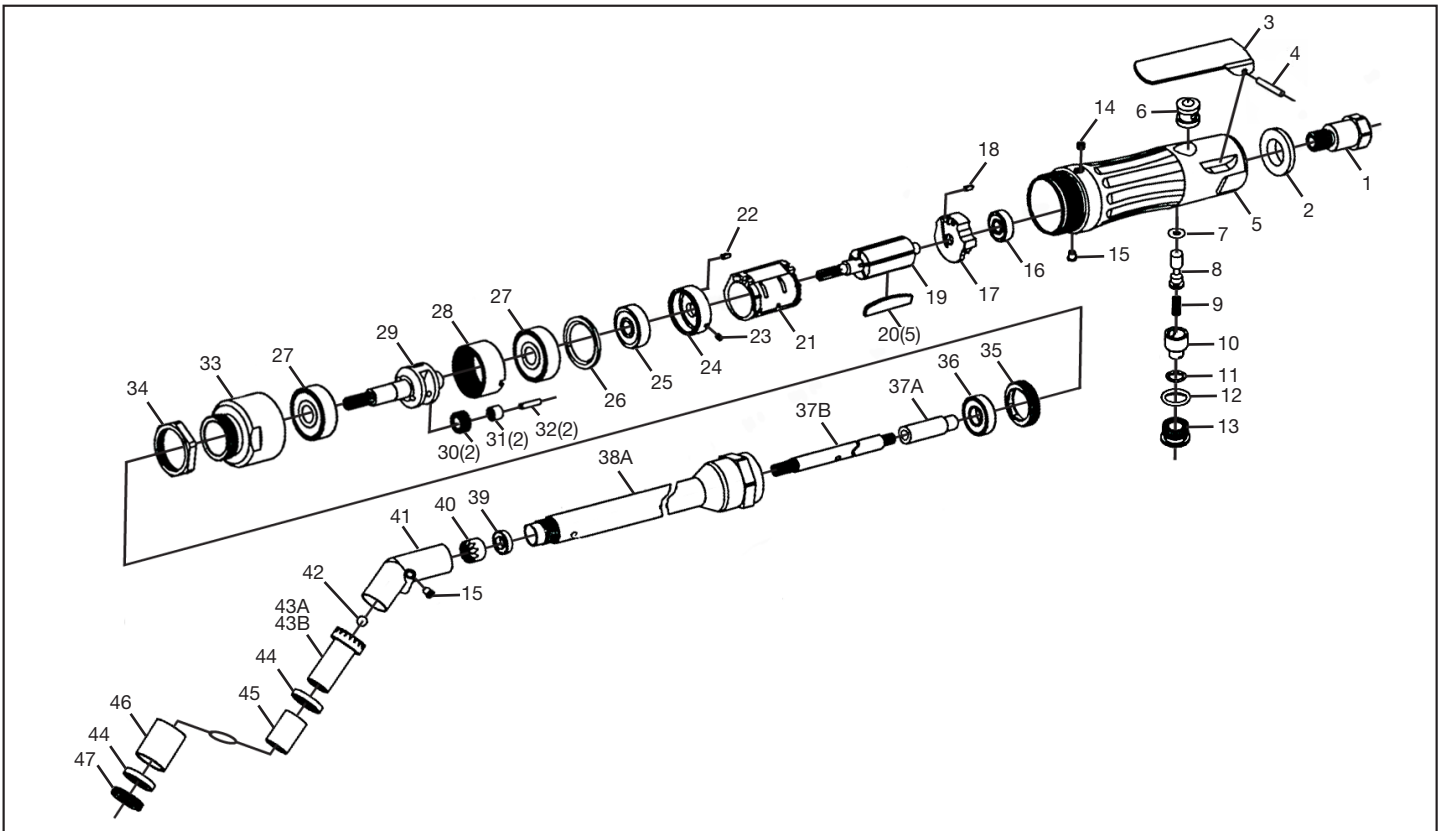




MICHIGAN PNEUMATIC TOOL, INC.

MP-9030EXT-45 1/4-28 45° Ext. Drill

MP-9030EXT-45-93240 9/32-40 45° Ext. Drill



Index	Part No.	Description	Qty.
1	903001	Inlet	1
2	903002	Muffler	1
3	903003	Lever	1
4	903004	Pin	1
5	903005	Housing	1
6	903006	Valve Bushing	1
7	903007	O-Ring	1
8	903008	Valve Stem	1
9	903009	Valve Spring	1
10	903010	Regulator	1
11	903011	O-Ring	1
12	903012	O-Ring	1
13	903013	Plug	1
14	903014	Set Screw	1
15	903015	Grease Fitting	2
16	903016	Ball Bearing	1
17	903017	End Plate	1
18	903018	Locating Pin	1
19	903019	Rotor	1
20	903020	Vanes	5
21	903021	Cylinder	1
22	903022	Locating Pin	1
23	903023	Locating Pin	1
24	903024	Front Plate	1
25	903025	Ball Bearing	1

Index	Part No.	Description	Qty.
26	903026	Spacer	1
27	903027	Ball Bearing	2
28	903028	Ring Gear	1
29	903029	Carrier	1
30	903030	Idler Gear	2
31	903031	Needle Bearing	2
32	903032	Pin	2
33	903033	Adapter	1
34	903034	Lock Nut	1
35	903035	Lock Ring	1
36	903036	Ball Bearing	1
37A	9030EXT45-37A	Adapter Spindle	1
37B	9030EXT45-37B	Driver Spindle	1
38A	9030EXT45-38A	Adapter Housing	1
39	9030EXT45-39	Ball Bearing	1
40	9030EXT45-40	Pinion	1
41	9030EXT45-41	Angle Housing	1
42	9030EXT45-42	Steel Ball	1
43A	9030EXT45-43A	Spindle Gear 1/4-28 Thread	1
43B	9030EXT45-43B	Spindle Gear 9/32-40 Thread	1
44	9030EXT45-44	Ball Bearing	2
45	9030EXT45-45	Spacer (S)	1
46	9030EXT45-46	Spacer (L)	1
47	9030EXT45-47	Lock Ring	1

03052016Rev3HMB | NP