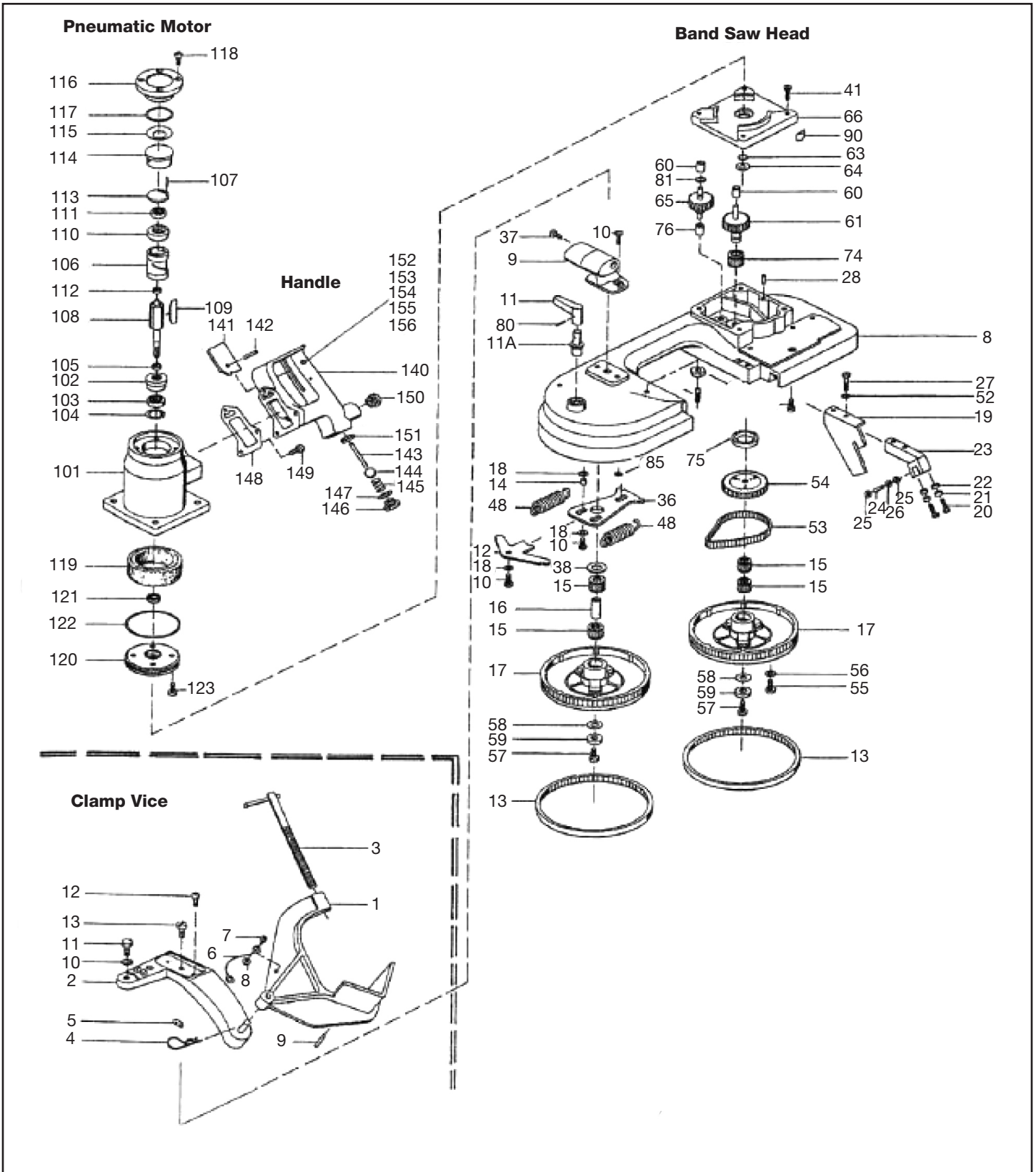




MICHIGAN PNEUMATIC TOOL, INC.

MP-5631-475 Air Band Saw



11052015Rev2HMB | NP



MICHIGAN PNEUMATIC TOOL, INC.

MP-5631-475 Air Band Saw

Index	Part No.	Description	Qty.
	5 6003 0020 N	Motor for AirBand Saw	1
	5 6003 0020 N	Motor for AirBand Saw	1
	5 6003 6000	Handle Complete	1
	5 6003 7000	Band Saw Head Complete	1
	5 6003 7000	Band Saw Head Complete	1
11A	5 6003 7030	Tension Shaft	1
23A	5 6003 7910	Blade Guide Assembly	1
	5 6003 9099	Carrying Case for AirBand Saw	1
118+ 123	9 1112 3030	Screw, Fillister Head	1
	9 3325 0870	Washer	1
8	5 6003 7010	Pulley Housing - Green	2
9	5 6003 6900	Knob Set	1
10	9 1164 0410	Screw	4
11	5 6003 7020	Tension Lever	2
12	5 6003 7040	Yoke	2
13	5 6003 7050	Pulley Tire	2
14	5 6003 7060	Bushing	1
15	9 1029 0160	Bearing	4
16	5 6003 7080	Pulley Shaft	1
17	5 6003 7090	Pulley	2
18	9 3325 0820	Washer	3
19	5 6003 7100	Stop	1
20	9 1164 0420	Screw	1
21	5 6003 7110	Blade Guide for #5 6003 0010	1
22	9 1029 0190	Blade Guide Bearing	1
23	5 6003 7120	Blade Guide Holder	1
24	9 1637 1740	Pin	1
25	9 3325 0830	Washer	2
26	9 1029 0200	Blade Guide Bearing	1
27	9 1164 0430	Screw	1
28	9 1637 1750	Pin	1
32	9 1164 0490	Screw	1
36	5 6003 7940	Plate Complete - Old #5 6003 7130	1
37	9 1164 0440	Screw	1
41	9 1164 0460	Screw	1
48	9 1808 0240	Tension Spring	1
52	9 3314 0230	Lock Washer	1
53	5 6003 7140	Chain	1
54	5 6003 7150	Driven Sprocket	1
55	9 1164 0470	Screw	1
56	9 3314 0250	Lock Washer	1
57	9 1164 0480	Screw	2
58	9 3325 0840	Washer	2
59	9 3325 0850	Washer	2
60	9 1029 0170	Bearing	1
61	5 6003 4910	Gear & Sprocket Assembly	1
63	9 1901 9770	O-Ring	1
64	5 6003 7160	Slinger	1
65	5 6003 4040	Intermediate Gear	1

Index	Part No.	Description	Qty.
66	5 6003 4930	Intermediate Plate Assembly	1
74	9 1013 0390	Needle Bearing	1
75	9 1908 1130	Sealing	1
76	9 1929 0180	Bearing	1
80	9 1637 1760	Pin	1
81	9 3325 0860	Washer	1
83	5 6003 7170	Nut, T2	1
84	5 6003 7180	Set Screw, T2	1
85	9 1702 0200	Snap Ring	1
90	5 6003 9150	Cover	1
101	5 6003 1910	Motor Housing	1
102	5 6003 1100	End Plate	1
103	9 1001 0050	Grooved Ball Bearing	1
104	9 1703 0040	Ring, Snap	1
105	2 2404 1080	Spacer/Shim	1
106	3 8636 1020	Cylinder Bushing	1
107	9 1619 0700	Pin	1
108	5 6003 1030	Rotor	1
109	3 8601 1050	Vane	5
110	2 2404 1110	End Plate	1
111	9 1001 0030	Grooved Ball Bearing	1
112	1 1101 1090	Spacer/Shim	1
113	3 8636 1120	Cover	1
114	5 6003 1180	Cap	1
115	9 1801 0400	Spring, Belleville	1
116	5 6003 1130	Motor Cover	1
117	9 1901 2370	O-Ring	1
119	1 2034 6100	Sound Absorber	1
120	5 6003 1150	Motor Cover	1
121	9 1905 0250	Sealing Ring SEE #111 368	1
122	9 1901 2430	O-Ring	1
140	5 6003 6010	Handle	1
141	5 6003 3040	Valve Trigger	1
142	9 1641 0020	Pin, Notched	1
143	9 1637 1730	Pin, Cylindrical	1
144	9 1017 0080	Ball	1
145	9 1803 0250	Spring, Compression	1
146	9 1171 9060	Screw Plug	1
147	9 1901 3230	O-Ring	1
148	5 6003 6060	Sealing	1
149	9 1112 4020	Screw	1
150	9 2203 0210	Nipple	1
151	9 1903 0160	Sealing	1
152	5 6011 3170	Guiding Bushing	1
153	5 6011 3150	Lock Bolt	1
154	9 1803 3360	Compression Spring	1
155	5 6011 3160	Bushing	1
156	9 1166 0170	Screw	1