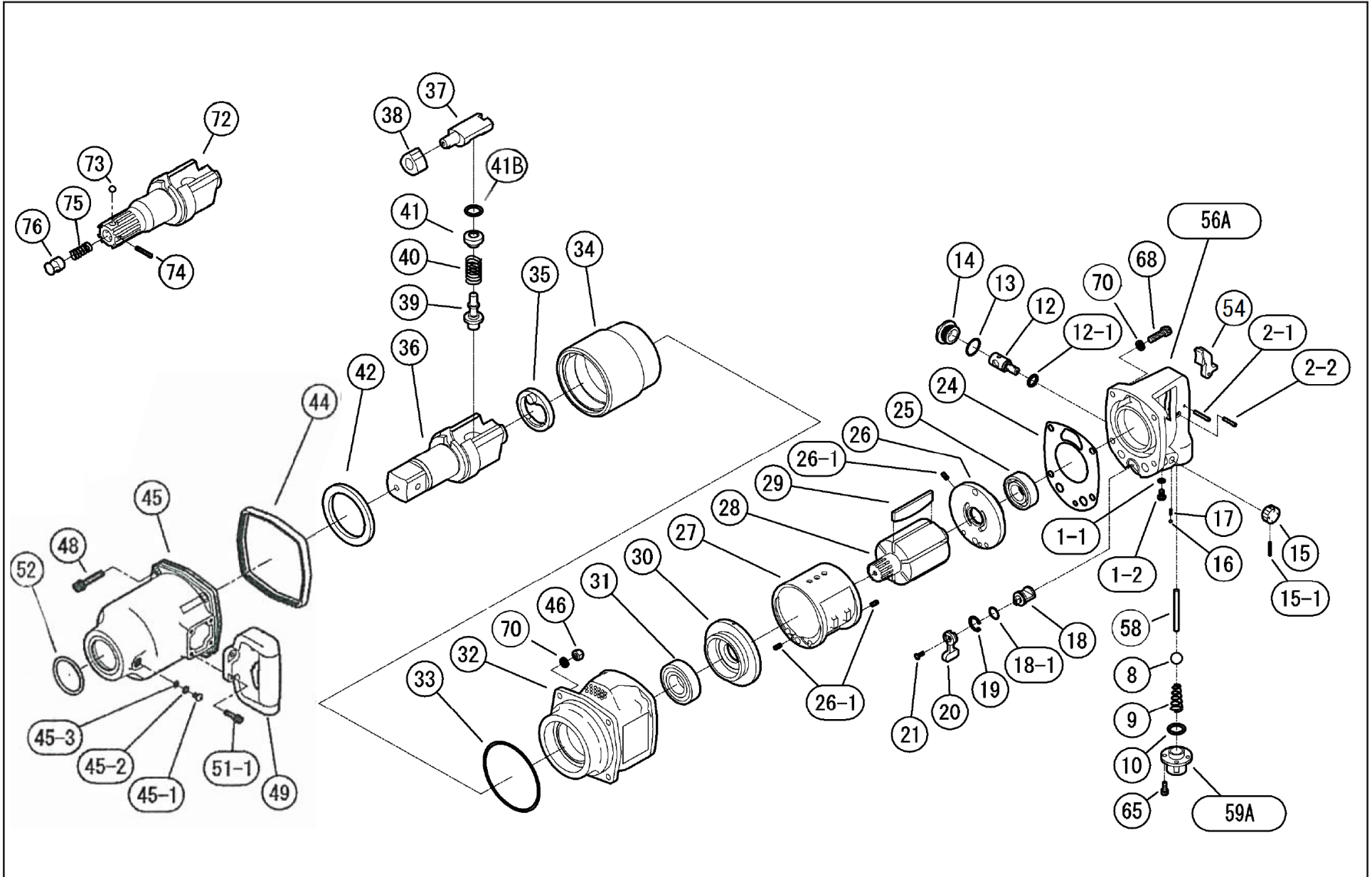




MICHIGAN PNEUMATIC TOOL, INC.

MP-5000N 1-1/2" Heavy Duty Impact

MP-5000N-5S #5 Spline Heavy Duty Impact





MICHIGAN PNEUMATIC TOOL, INC.

MP-5000N 1-1/2" Heavy Duty Impact

MP-5000N-5S #5 Spline Heavy Duty Impact

Index	Part No.	Description	Qty.
1-1	5000N-1-1	O-Ring	1
1-2	5000N-1-2	Screw	1
2-1	5000N-2-1	Pin	1
2-2	5000N-2-2	Pin	1
8	5000N-8	Throttle Valve	1
9	5000N-9	Throttle Spring	1
10	5000N-10	O-Ring	1
12	5000N-12	Regulator Valve	1
12-1	5000N-12-1	O-Ring	1
13	5000N-13	O-Ring	1
14	5000N-14	Plug	1
15	5000N-15	Regulator Knob	1
15-1	5000N-15-1	Pin	1
16	5000N-16	Steel Ball	1
17	5000N-17	Knock Spring	1
18	5000N-18	Reverse Valve	1
18-1	5000N-18-1	O-Ring	1
19	5000N-19	Retainer	1
20	5000N-20	Reverse Lever	1
21	5000N-21	Screw	1
24	5000N-24	Motor Housing Gasket	1
25	5000N-25	Rear Bearing	1
26	5000N-26	Rear End Plate	1
26-1	5000N-26-1	Spring Pin	3
27	5000N-27	Cylinder	1
28	5000N-28	Rotor	1
29	5000N-29	Rotor Blade	6
30	5000N-30	Front End Plate	1
31	5000N-31	Ball Bearing	1
32	5000N-32	Motor Case C.P.	1
33	5000N-33	O-Ring	1
34	5000N-34	Hammer Wheel	1

Index	Part No.	Description	Qty.
35	5000N-35	Retainer	1
36	5000N-36	1-1/2" SQ. DR. Anvil	1
37	5000N-37	Anvil Peice	1
38	5000N-38	Cam	1
39	5000N-39	Plunger A	1
40	5000N-40	Spring	1
41	5000N-41	Plunger B	1
41B	5000N-41-TUW	Take Up Washer	1
42	5000N-42	Bushing	1
44	5000N-44	Rear Rubber Protector	1
45	5000N-45	Impact Housing CP	1
45-1	5000N-45-1	Grease Screw	1
45-2	5000N-45-2	Toothed Lock Washer	1
45-3	5000N-45-3	O-Ring	1
46	5000N-46	Lock Nut	4
49	5000N-49	Dead Handle C.P.	1
51-1	5000N-51-1	Bolt	4
52	5000N-52	O-Ring	1
Parts for Inside Trigger Handle			
54	5000N-54	Throttle Lever	1
56A	5000N-56A	Handle C.P. (NPT)	1
58	5000N-58	Throttle Valve Pin	1
59A	5000N-59A	Inlet Bushing (NPT)	1
65	5000N-65	Bolt	4
68	5000N-68	Bolt	4
69	5000N-69	Bolt	4
70	5000N-70	Nord-lock Washer NL8	12
72	5000N-72	Ball Lock Anvil C.P.	1
73	5000N-73	Steel Ball	1
74	5000N-74	Pin	1
75	5000N-75	Spring	1
76	5000N-76	Ball Stopper	1