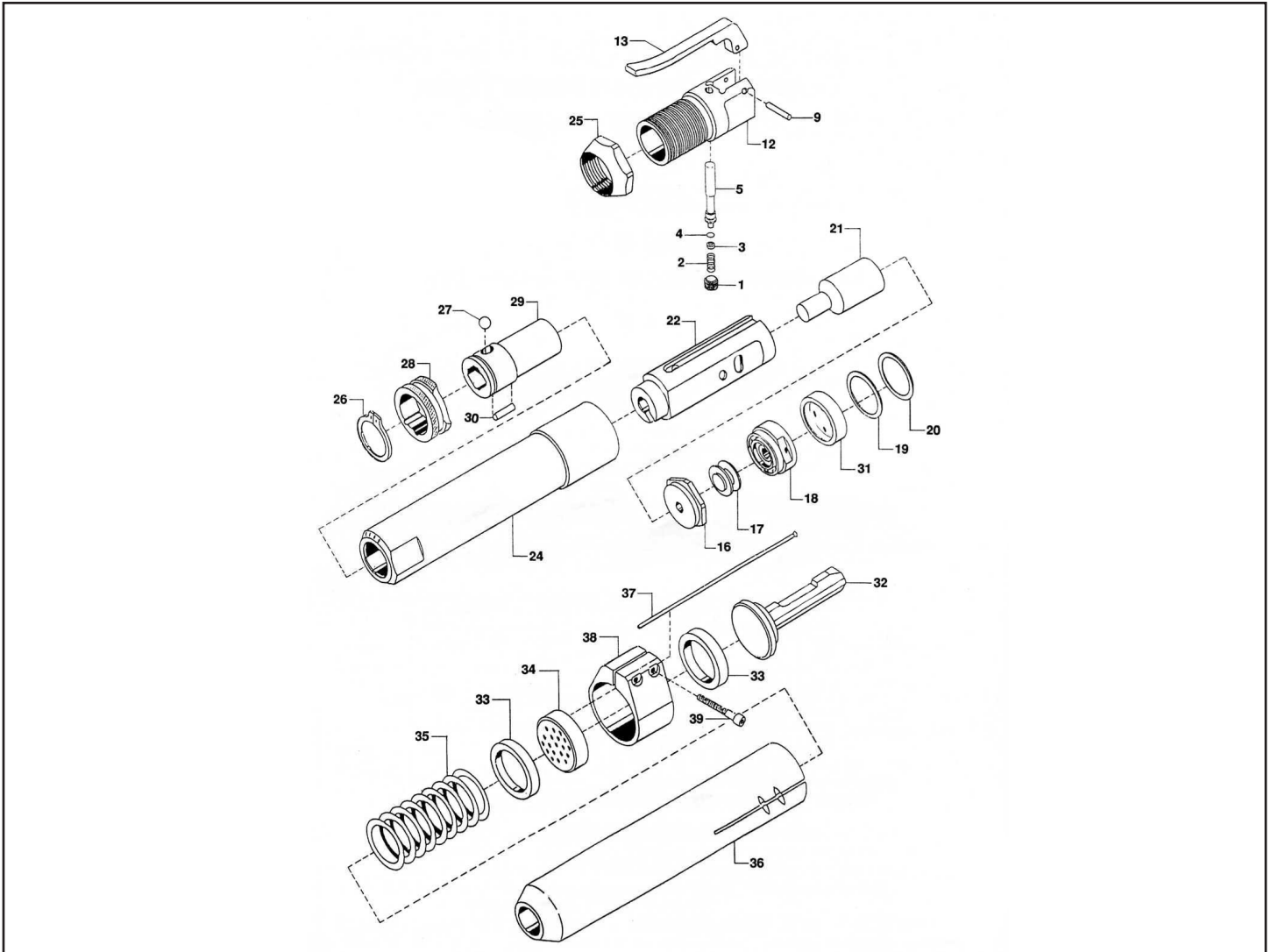




MICHIGAN PNEUMATIC TOOL, INC.

MP-456L Flux Chipper



| Index | Part No. | Description | Qty. |
|-------|----------|----------------------------------|------|
| 1 | S-4876 | Valve Plug | 1 |
| 2 | S-4585 | Spring Valve | 1 |
| 3 | S-4584 | O-Ring Cap | 1 |
| 4 | S-4076 | O-Ring | 1 |
| 5 | S-4582 | Throttle Valve | 1 |
| 9 | S-4043 | Throttle Lever Pin | 1 |
| 12 | S-4273 | Backhead Model "B" | 1 |
| 13 | S-4556 | Throttle Lever | 1 |
| 15 | S-4320 | Allen Wrench (Not Shown) | 1 |
| 16 | S-4034 | Case Valve Cycling | 1 |
| 17 | S-4310 | Valve Cycling | 1 |
| 18 | S-4309 | Lid | 1 |
| 19 | S-4037 | Shim .005 | 1 |
| 20 | S-4038 | Shim .010 | 1 |
| 21 | S-4033 | Piston | 1 |
| 22 | S-4557 | Cylinder Sleeve | 1 |
| 24 | S-4312 | Cylinder (Inc. sleeve) Model "B" | 1 |

| Index | Part No. | Description | Qty. |
|-------|----------|--------------------------------|------|
| 25 | S-4271 | Locknut Backhead Model "B" | 1 |
| 26 | S-4934 | Retaining Ring | 1 |
| 27 | S-4416 | Steel Ball | 1 |
| 28 | S-4813 | Ring Chisel Lock | 1 |
| 29 | S-4933 | Chisel 1/2" Q.O Sleeve | 1 |
| 30 | S-4815 | Lock Rubber | 1 |
| 31 | S-4736 | Head Model "B" Spacer | 1 |
| 32 | S-4144 | Anvil | 1 |
| 33 | S-4964 | Buffer | 2 |
| 34 | S-4145 | Needle Holder | 1 |
| 35 | S-4150 | Needle Spring | 1 |
| 36 | S-4630 | Needle Housing (Round Nose) | 1 |
| 37 | S-4146 | Needle Set 7" 19 Steel Needles | 1 |
| 38 | S-4632 | Needle Housing Clamp | 1 |
| 39 | S-4633 | Clamp Screw | 2 |
| 40 | S-4493 | Allen Wrench (Not Shown) | 1 |

10132015Rev4HMB | NP