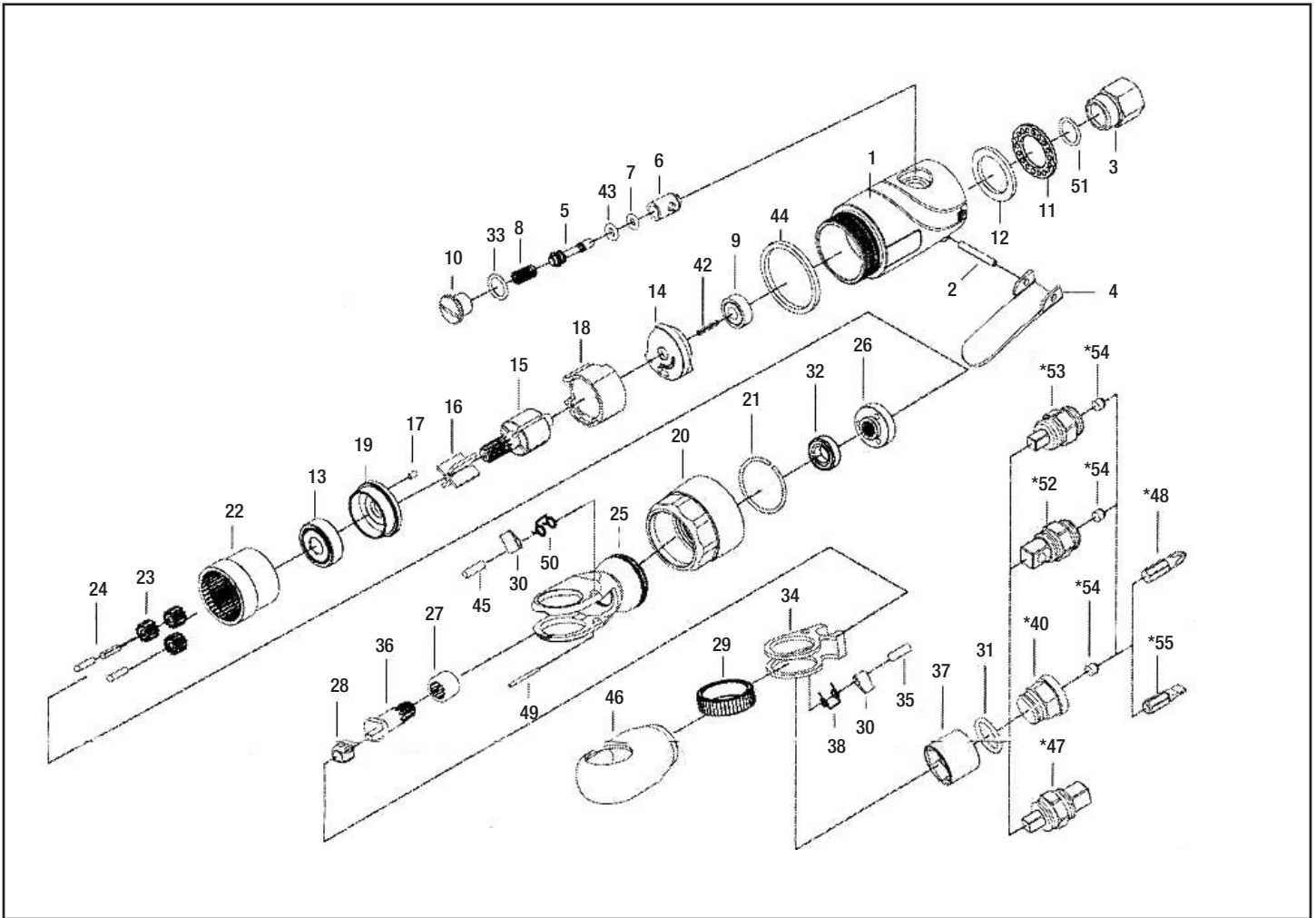




MICHIGAN PNEUMATIC TOOL, INC.

MP-1632K-ST Multi-Function Ratchet Wrench



Index	Part No.	Description	Qty.
1	32-301501	Housing	1
2	50102-12	Spring Pin	1
3	32-301503	Air Inlet	1
4	32-301504	Throttle Lever	1
5	32-301505	Valve Stem	1
6	32-301506	Valve Bushing	1
7	OR00200100	O-Ring	1
8	32-301508	Spring	1
9	052213	Ball Bearing	1
10	32-301510	Throttle Valve Plug	1
11	32-301511	Exhaust Diffuser	1
12	32-301512	Damping Material	1
13	030120	Ball Bearing	1
14	32-301514	Rear End Plate	1
15	32-301515	Rotor	1
16	32-301516	Vane	4
17	70117-13	Spring Pin	1
18	32-301518	Cylinder	1
19	32-301519	Front End Plate	1
20	32-301526	Clamp Nut	1
21	32-301629	Retainer Ring	1
22	32-301521	Internal Gear	1

Index	Part No.	Description	Qty.
23	32-301523	Planet Gear	3
24	PN03051208	Pin	3
25	32-301628	Ratchet Housing	1
26	32-301627	Idler Gear Plate	1
27	0HK910	Needle Bearing	1
28	32-301231	Drive Bushing	1
29	32-301622	Ratchet Ring	2
30	32-301637	Ratchet Pawl	2
31	72009	O-Ring	1
32	0689ZZ	Bearing	1
33	40333	O-Ring	1
34	32-301632	Yoke	1
35	PN04001108	Pin	1
36	32-301631	Crank Shift	1
37	32-301639	Socket	1
38	32-301633	Torsion Spring	1
*40	32-301641	Bit Seat	1
42	SP02001200	Spring Pin	1
43	30107	O-Ring	1
44	32-301555	Rubber Ring	1
45	805111430000	Pin	1
46	32-301653	Rubber Hat	1



MICHIGAN PNEUMATIC TOOL, INC.

MP-1632K-ST Multi-Function Ratchet Wrench

Index	Part No.	Description	Qty.
*47	32-301640	Square Anvil	1
*48	32-301620	Bit	1
49	SP01061800	Spring Pin	1
50	32-301635	Torsion Spring	1
51	OR01104103	O-Ring	1
*52	32-301642	Square Anvil	1
*53	32-301643	Square Anvil	1
*54	32-301659	Column Magnet (3)	3
*55	32-301621	Bit	1