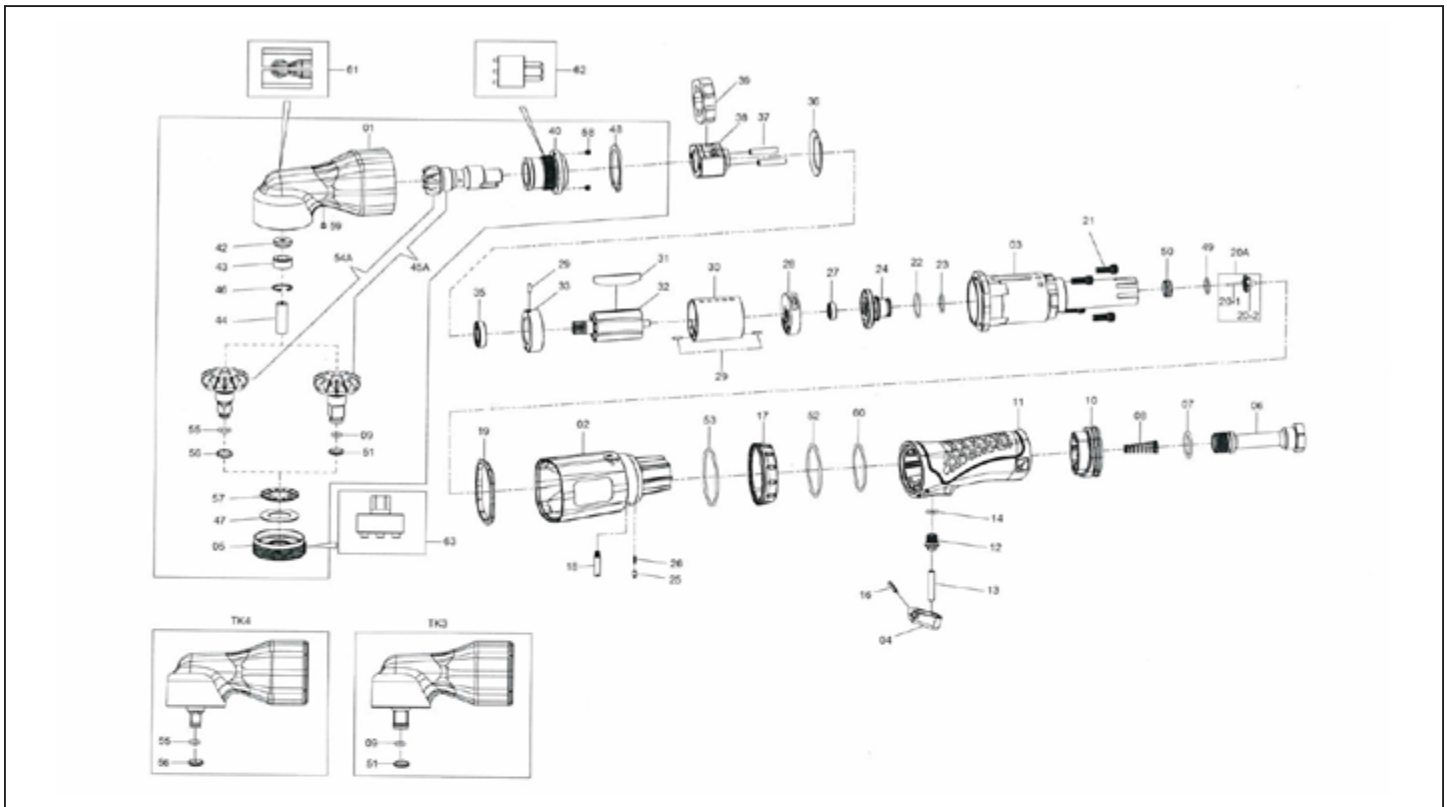




MICHIGAN PNEUMATIC TOOL, INC.

MP-1450RA 1/2" Right Angle Impact



Index	Part No.	Description	Qty.
*01	1450RA-1	Hammer Case Assy (incl. 42, 43, 59)	1
02	1450RA-2	Housing	1
03	1450RA-3	Motor Housing	1
04	1450RA-4	Trigger	1
05	1450RA-5	Lock Ring	1
06	1450RA-6	Air Inlet	1
07	1450RA-7	O-Ring	1
08	1450RA-8	Spring	1
10	1450RA-10	Exhaust Deflector	1
11	1450RA-11	Grip	1
12	1450RA-12	Bushing	1
13	1450RA-13	Valve Stem	1
14	1450RA-14	O-Ring	1
16	1450RA-16	Spring Pin	1
17	1450RA-17	Reverse Knob	1
18	1450RA-18	Pin	1
19	1450RA-19	Gasket	1
*20A	1450-20A	Throttle Valve Assy (incl. 20-A1.20A-2)	1
•20A-1	1450RA-20A-1	Pin	1
•20A-2	1450RA-20A-2	Throttle Valve	1
21	1450RA-21	Screw	4
22	1450RA-22	O-Ring	1
23	1450RA-23	O-Ring	1
24	1450RA-24	Reverse Valve	1
25	1450RA-25	Pin	1
26	1450-26	Spring	1
27	1450-27	Bearing	1

Index	Part No.	Description	Qty.
28	1450RA-28	End Plate	1
29	1450RA-29	Spring Pin	3
30	1450RA-30	Cylinder	1
31	1450RA-31	Rotor Blade	7
32	1450RA-32	Rotor	1
33	1450RA-33	End Plate	1
35	1450RA-35	Bearing	1
36	1450RA-36	Washer	1
37	1450RA-37	Hammer Pin	2
38	1450RA-38	Hammer Frame	1
39	1450RA-39	Hammer	1
40	1450RA-40	Bushing	1
•42	1450RA-42	Washer	1
•43	1450RA-43	Hammer Case Bushing	1
44	1450RA-44	Pin	1
46	1450RA-46	Retainer	1
47	1450RA-47	Thrust Washer	1
48	1450RA-48	Retainer	1
49	1450RA-49	O-Ring	1
50	1450RA-50	Throttle Valve Seat	1
52	1450RA-52	O-Ring	1
53	1450RA-53	O-Ring	1
57	1450RA-57	Needle Bearing	1
58	1450RA-58	Screw	2
•59	1450RA-59	Grease Fitting	1
60	1450RA-60	Gasket	1
61	1450RA-61	Fixture for #01 Hammer Case	1

* Must be Purchased in Assembly Set • Recommended not to be purchased alone due to assembly difficulty

6850 Middlebelt Rd. • Romulus, MI 48174 • 1-800-521-8104 • Ph: (313) 933-5890 • Fax: (313) 933-0440

www.michiganpneumatic.com • e-mail: mpt@michiganpneumatic.com

06072018Rev2MME | NP



MICHIGAN PNEUMATIC TOOL, INC.

MP-1450RA 1/2" Right Angle Impact

Index	Part No.	Description	Qty.
62	1450RA-62	Spanner Tool for #40 Bushing	1
63	1450RA-63	Spanner Tool for #5 Lock Bushing	1
1475RA-A			
09	1450RA-09	O-Ring	1
51	1450RA-51	Socket Retainer	1
45A	1450RA-45A	1/2" Standard Anvil Assy	1
1375RA-A			
55	1450RA-55	O-Ring	1
56	1450RA-56	Socket Retainer	1
54A	1450RA-54A	3/8" Anvil Assy	1
TK1	1450RA-TK1	Tune-Up Kit (incl. 7, 8, 9, 14, 19, 22, 23, 26, 31, (7), 49, 51, 52, 53, 60) (for KI-1475-A)	1
TK2	1450RA-TK2	Tune-Up Kit (incl. 7, 8, 9, 14, 19, 22, 23, 26, 31 (7), 49, 51, 52, 53, 60) (for KI-1375-A)	1
TK3	1450RA-TK3	1/2" Angle Head Assy (for KI-1475) (incl. 01, 05, 09, 40, 43, 44, 46, 47, 48, 51, 45A, 57, 58, 59)	1