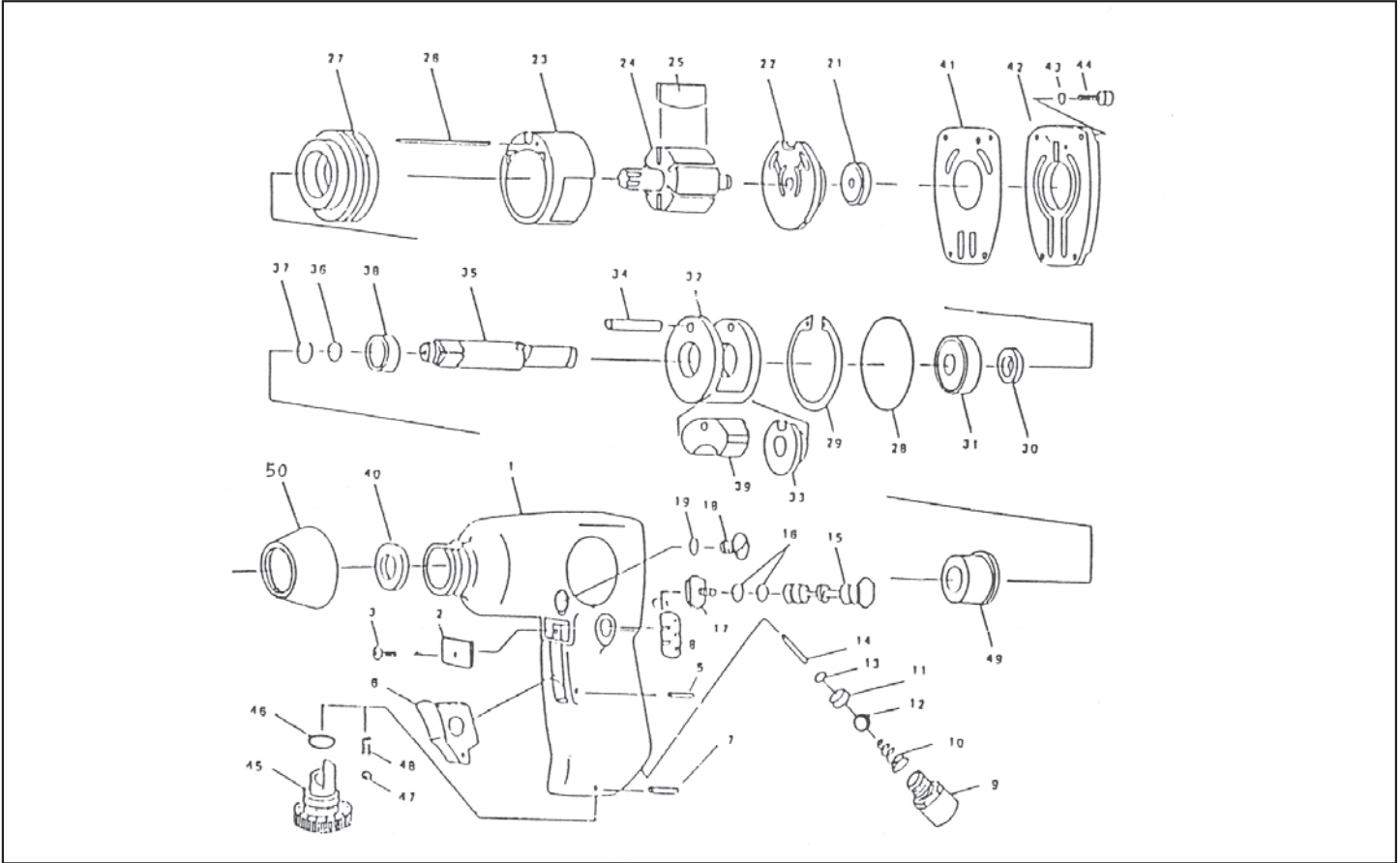




MICHIGAN PNEUMATIC TOOL, INC.

MP-135-ST 3/8" Impact Wrench



Index	Part No.	Description	Qty.
1	106501	Motor Housing	1
2	106502	Deflector	1
3	106503	Screw (4 x 8)	1
5	106505	Pin	1
6	106506	Trigger	1
7	106507	Pin	1
8	106508	Reverse Lever	1
9	106509	Hose Adapter	1
10	106510	Throttle Valve Spring	1
11	106511	O-Ring Retainer	1
12	106512	Steel Ball	1
13	106513	O-Ring	1
14	106514	Valve Pin	1
15	106515	Reverse Valve	1
16	106516	O-Ring	1
17	106517	Reverse Valve Screw	2
18	106518	Plug	1
19	106519	O-Ring	1
21	106521	Ball Bearing (626)	2
22	106522	Rear End Plate	1
23	106523	Cylinder	1
24	106524	Rotor	1
25	106525	Rotor Blade	1
26	106526	Dowel Pin	6

Index	Part No.	Description	Qty.
27	106527	Front End Plate	1
28	106528	O-Ring	1
29	106529	Retaining Ring	1
30	106530	Oil Seal	1
31	106531	Ball Bearing (EE-3)	1
32	106532	Hammer Cage	1
33	106533	Drive Cam	1
34	106534	Hammer Pin	1
35	106535	Anvil Shank	1
36	106536	Socket O-Ring	1
37	106537	Socket Retainer	1
38	106538	Hammer Cage Space	1
39	106539	Hammer Dog	1
40	106540	Oil Seal	1
41	106541	Motor Gasket	1
42	106542	Housing Cap	1
43	106543	Washer (4M)	4
44	106544	Cap Screw	4
45	106545	Air Pressure	1
46	106546	O-Ring	1
47	106547	Steel Ball (1/8)	1
48	106548	Regulator Spring	1
49	106549	Spindle Bush	1
50	106550	Rubber Nose Guard	1

10152015Rev2HMB | NP