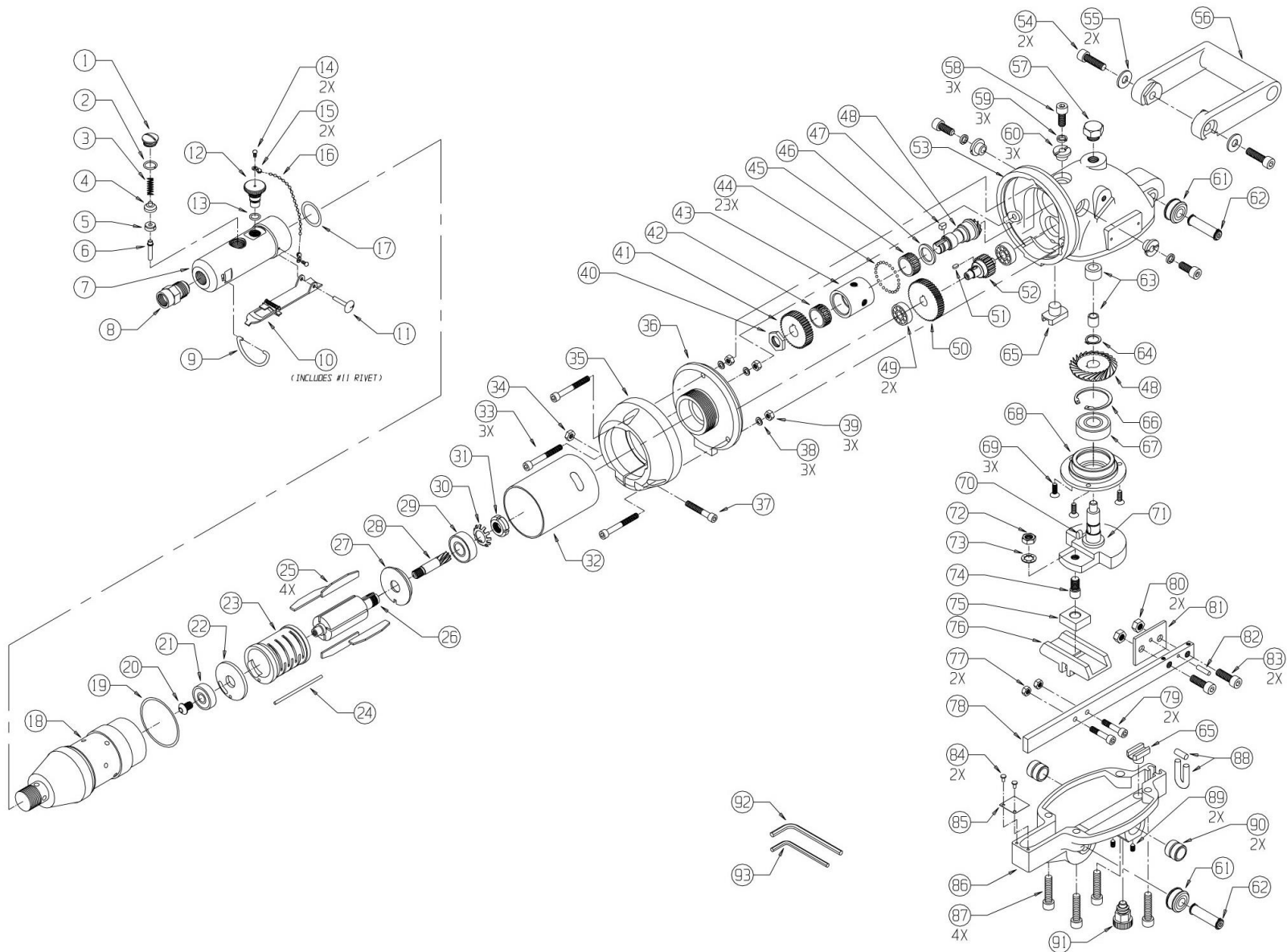




**MICHIGAN PNEUMATIC TOOL, INC.**

# MP-10267 Reciprocating Hack Saw





**MICHIGAN PNEUMATIC TOOL, INC.**

# **MP-10267 Reciprocating Hack Saw**

Item	Part #	Description	Included in Kit
1	18308	Valve Cover	B E K
2	18309	O-ring	B E I K
3	18310	Spring	B E I
4	18311	Seal Cup	B E I
5	18312	Valve Seal	B E I
6	18313	Valve Pin	B E I
7	18314	Throttle Body	B E L
8	18087	Nut & Screen Assy	B E
9	18306	O-ring	B E L
10	18336	Trigger Assy.	B E L M
11	18316	Rivet	B E L M
12	18317	Throttle Screw	B E J
13	18318	O-ring	B E I J
14	18319	Drive Stud	B E J L N
15	18320	End Coupling	B E J L N
16	18321	Bead Chain	B E N
17	18077	O-ring	-
18	18074	Air Motor Body & Insert	E
19	18078	O-ring	-
20	18072	Screw	E F
21	18071	Ball Bearing	E F
22	18069	Rear Plate	E F
23	18067	Cylinder	E F
24	18068	Cylinder Pin	E
25	18065	Vane Set	E F
26	18066	Rotor	E F
27	18064	Front End Plate	E F
28	19005	Pinion	E F
29	18063	Ball Bearing	E F
30	18062	Lock Washer	E F
31	18061	Lock Nut	E F
32	17990	Air Motor Cover	E R
33	18051	Cap Screw	E R
34	18162	Nut	E R
35	18059	Collar	E R
36	18058	Flange	E R
37	18163	Cap Screw	E R

Item	Part #	Description	Included in Kit
38	18052	Washer	E R
39	18057	Nut	E R
40	18017	Nut	C P
41	18016	Gear	C P
42	18009	Needle Bearing	C P
43	18013	Ball Shell	C P
44	18012	Ball Set	C P
45	18014	Needle Bearing	C P
46	18011	Ball Race	C P
47	18015	Key	C P
48	18008	Bevel Pinion/Gear Set	C O P
49	18003	Ball Bearing	C E R
50	18005	Helical Gear	-
51	18006	Key	-
52	18004	Pinion	-
53	18001	Gear Housing	C
54	18164	Cap Screw	-
55	18160	Washer	-
56	18053	Handle	-
57	18002	Oil Screw	C
58	18019	Cap Screw	C
59	18020	Lock Washer	C
60	18018	Eccentric Bushing	C
61	17888	Roller Assy.	A C
62	18041	Pin & Ret. Set	A C
63	18028	Race & Needle Bearing	C O
64	18027	Retaining Ring	C O
65	18039	Guide Piece	A C
66	18024	Retaining Ring	C O
67	18022	Ball Bearing	C O
68	18023	Bearing Plate	C O
69	18029	Screw	C
70	18025	Key	C O
71	18021	Crankshaft	C O Q
72	18032	Hex Nut	C O Q
73	18031	Spring Washer	C O Q
74	18030	Crankpin	C O Q

Item	Part #	Description	Included in Kit
75	18033	Slide Block	-
76	18143-2	Channel	G H
77	18057	Nut	G H
78	18143-1	Connecting Rod	G H
79	18724	Cap Screw	G H
80	18035	Nut	H S
81	18036	Thrust Plate	H S
82	18148	Pin	H S
83	18328	Bolt	H S
84	18049	Rivet	A
85	18050	Cover Plate	A
86	18323	Cover	A D
87	18055	Cap Screw	-
88	18045	Felt Gasket	A
89	17887	Set Screw	A D
90	18092	Bushing	A D
91	18048	Mount/Lock Assy.	A
92	18090	5mm Hex Key Wrench	-
93	18091	6mm Hex Key Wrench	-



**MICHIGAN PNEUMATIC TOOL, INC.**

# **MP-10267** Reciprocating Hack Saw

<b>Kit Letter</b>	<b>Part #</b>	<b>Description</b>	<b>Includes Item #s</b>
A	17886	Cover Assembly	"61, 62, 65, 84, 85, 88, 91 & Kit D"
B	17999	"Throttle Assy.- Lockout Type"	"1, 2, 3, 4, 5, 6, 7, 8, 9, 10, 11, 12, 13, 14, 15, 16"
C	18000	"Gear Head Assembly"	"49, 53, 57, 58, 59, 60, 61, 62, 65, 69 & Kits O, P"
D	18037	Gear Housing Cover Assembly	86, 89, 90
E	18042	"Air Motor Assembly"	18, 24 & Kits B, F, R
F	18042-1	Rotor Assembly	"20, 21, 22, 23, 24, 25, 26, 27, 28, 29, 30, 31"
G	18143	"Connecting Rod & Channel Assy."	76, 77, 78, 79
H	18145	"Connecting Rod Assy. With Lock"	Kits G, S
I	18301	Valve & Seal Kit	2, 3, 4, 5, 6, 13
J	18302	Throttle Screw & Seal Assy.	12, 13, 14, 15
K	18303	Cap & Seal	1, 2
L	18304	"Throttle Body Sub-Assembly"	7, 9, 10, 11, 14, 15
M	18305	Handle Kit	10, 11
N	18307	Bead Chain Kit	14, 15, 16
O	18324	"Crankshaft Assembly"	"48 (Less Bevel Pinion) 63, 64, 66, 67, 68, 70 & Kit Q"
P	18325	"Ball Shell Assembly"	"40, 41, 42, 43, 44, 45, 46, 47, 48 (Less Bevel Gear)"
Q	18326	"Crank & Pin Assembly"	71, 72, 73, 74
R	18327	"Cover & Flange Assembly"	"32, 33, 34, 35, 36, 37, 38 39, 49"
S	"18150-1"	"Blade Locking Device"	80,81, 82, 83