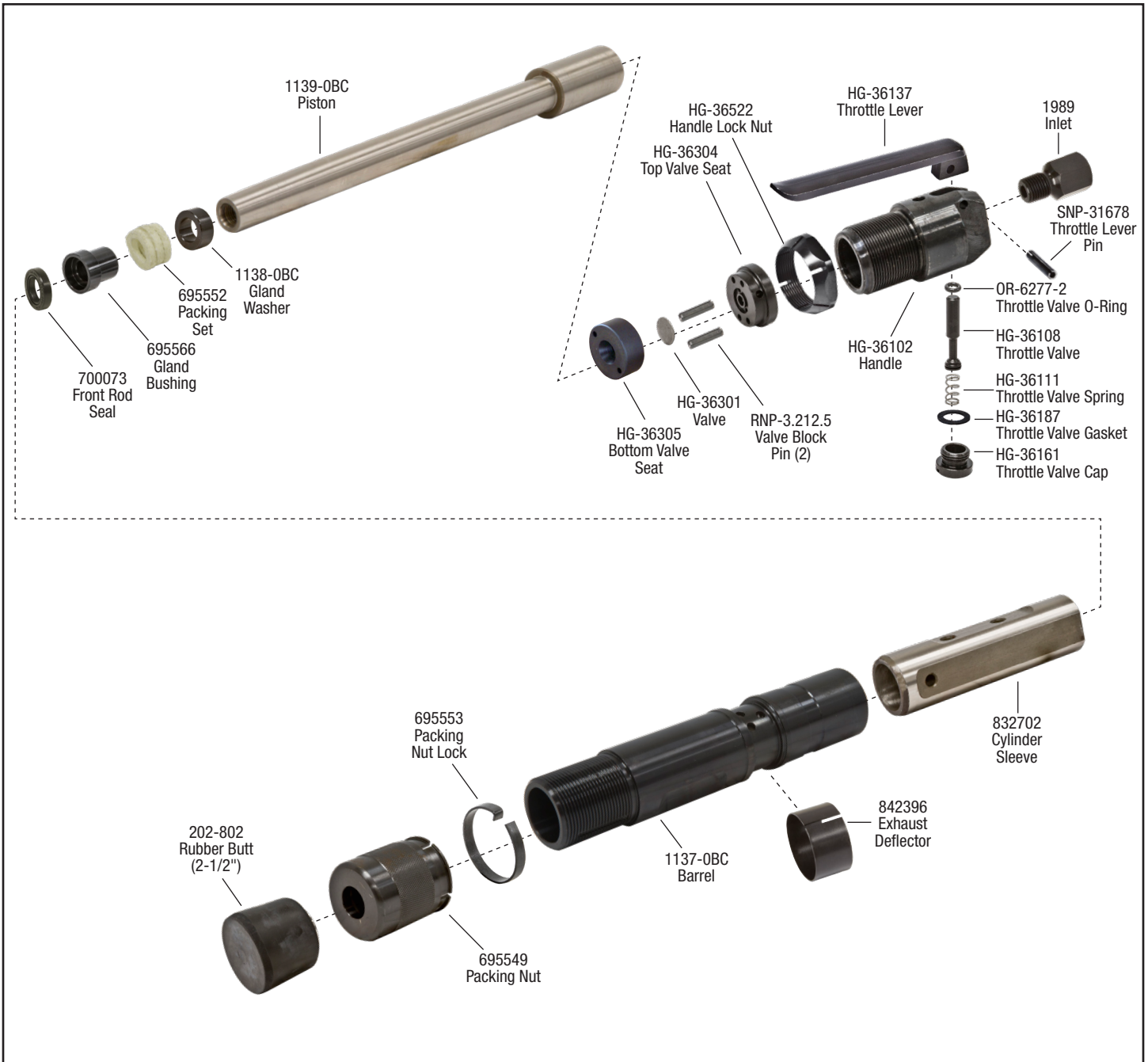




**MICHIGAN PNEUMATIC TOOL, INC.**

# MP-OB Bench Rammer





**Rubber Rammer Butts**

Made of the finest neoprene to ensure uniformity of bonding. Highly resistant to oil and wear. Please specify tool model number and size of butt when ordering. Solid aluminum, steel and rectangular butts available.



**201**  
1-3/4" Dia.



**202**  
2-3/8" Dia.



**203**  
3-1/4" Dia.



**204**  
4" Dia.



**205**  
5" Dia.

Part No.	Taper
201-802	802

Part No.	Taper
202-802	802

Part No.	Taper
203-802	802

Part No.	Taper
204-802	802

Part No.	Taper
205-802	802

802 Taper
MP-OB, BD2BA, BD1BA
Master Power 1BA, 2BA
B&D 5200, 5205
Cleco OB, 1B, 1F
TX-70B, TX8-2, TX8-4

**Butt Retaining Screws**

Designed to retain 801, 802 and 803 series butts to the piston.



**130SR-85**



**TX-00203**

Butt Screw Part No.	Thread	Tool Model
130SR-85	5/16"-18	MP-130
TX-00203	3/8"-24	MP-OB, MP-BD1BA, MP-BD2BA, MP-241

**Steel Rammer Butts**



**200-802**  
2" Steel  
802 Taper



**200-802-BS**  
2" Steel  
802 Taper  
Screw-Type



**300-802**  
3" Steel  
802 Taper



**300-802-SP**  
3" Steel  
802 Taper  
Screw-Type

Part No.	Taper
200-802	802
300-802	802
300-802-SP	802

**Specialty Rammer Butts with Screw Holes**

Primarily used on MP-OB, BD2BA and BD1BA Series rammers with butt retainer screw. MPT is the only company that machines our piston to accommodate retainer bolt screws.

**Rubber**



**202**  
2-3/8" Dia.



**203**  
3-1/4" Dia.

**Brass**



**202-802SP-BR**  
2-1/2" Dia. Brass

**Nylon**



**202-802SP-NY**  
2-1/2" Dia. Nylon

Part No.	Taper
202-802SP	802

Part No.	Taper
203-802SP	802

Part No.	Taper
202-802SP-BR	802

Part No.	Taper
202-802SP-NY	802

**Aluminum with Rubber Tip Butts**



**2010**  
2-3/8" Aluminum  
with Rubber Tip



**2515**  
3" Aluminum with  
Rubber Tip



**3525**  
3/4" x 2-3/8"  
Aluminum with  
Rubber Tip



**4030**  
1" x 2-7/8"  
Aluminum with  
Rubber Tip

**Aluminum Rammer Butts**



**275A-802**  
2-1/2" Aluminum  
802 Taper



**2009-SA802**  
2-1/2" Aluminum  
802 Taper

Part No.	Taper
2010-802	802

Part No.	Taper
2515-802	802

Part No.	Taper
3525-802	802

Part No.	Taper
4030-802	802

Part No.	Taper
275A-802	802
2009-SA802	802